

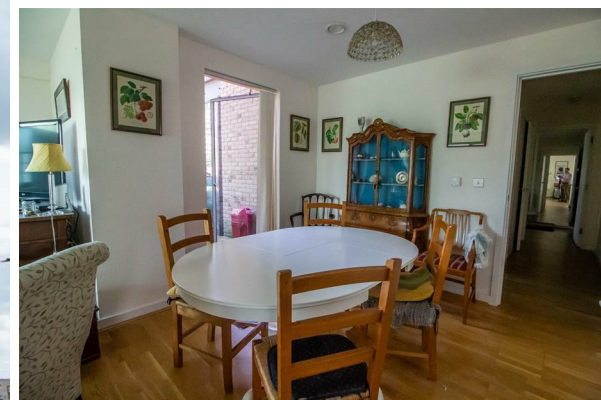


Redmayne Arnold & Harris  
estate agents, letting agents & surveyors

[rah.co.uk](http://rah.co.uk)



TO LET

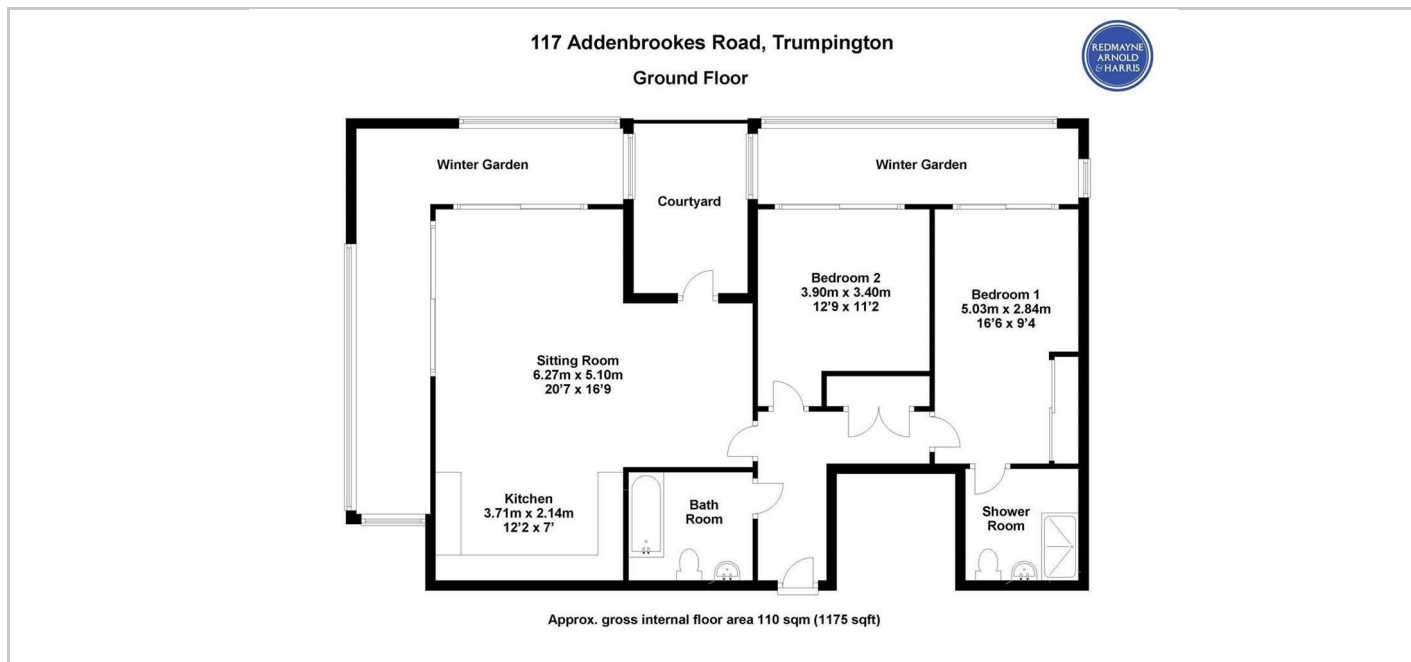


The Cherry Building 117 Addenbrookes Road, Trumpington, Cambridge, Cambridgeshire, CB2  
9BA

£1,850 PCM



- Entrance Hall
- Two double bedrooms
- Enclosed winter garden
- Car port
- Open plan kitchen/living room
- Bathroom and en suite shower room
- Courtyard area
- Bike store



## Directions

## THE PROPERTY

A stylish two bedroom, two bathroom ground floor apartment offering bright and spacious accommodation. Boasting an enclosed winter garden and car port, conveniently positioned for the City centre, M11 and Addenbrooke's Hospital/Cambridge Biomedical Campus. Integrated appliances. This property is managed by RAH.

EPC Rating: C

Council Tax Band: C

Minimum 12 Month Tenancy

Deposit: £2130

Holding Deposit: £390

## SITUATION

